



# www.GPS-LogIt.com

Test-version for the VDS German Speedsurfing Championship (valid until 14.09.2015):

[GPSLogItTrial.apk](#)

**Now available in Google Play Store for Android smartphones (>= 4.2.2).**

You can install it on any recent Android cell phone with at least 480 x 800 pixels screen resolution.

The default saved file-format is SBP that can be processed by GPSResults and uploaded to GP3S, however, for other purposes GPX-format is possible as well.

For the last run categories (2s, 10s, 250m, 500m, 1NM) the speed has first to raise above the Min. speed (red line in the graphics, selected units apply) and then drop below that speed to produce a value. The settings are saved and read before the next start of the app.

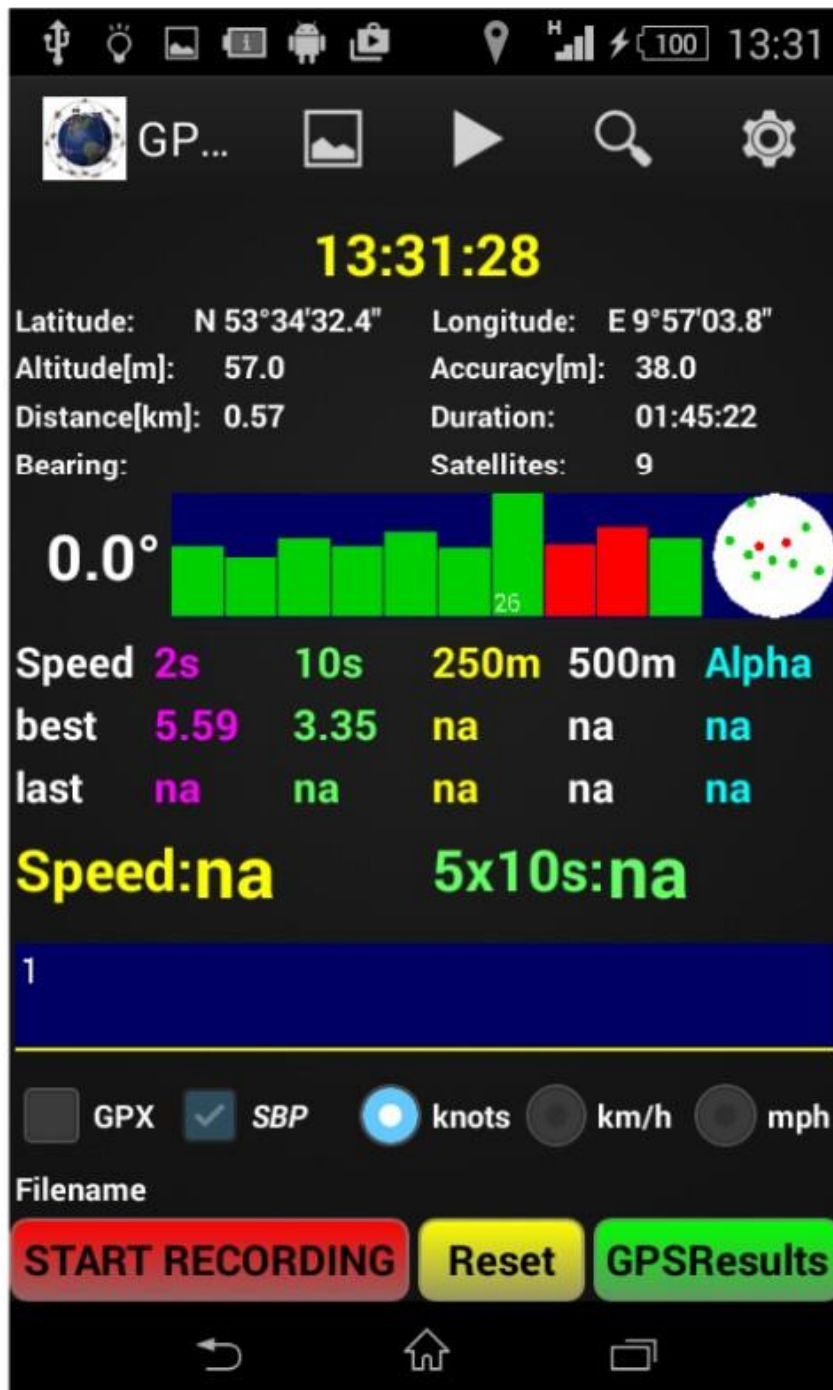
The line graphics on the start screen displays the last 10min (600s) of valid points per default. The displayed time-range can be adjusted in the **Settings** together with other parameters..

The App records Dopplerspeeds from the GPS-chipsets that are implemented in all recent smartphones, so the speed accuracy is far better than from positional data, the only missing item is the Dopplerspeed-error that only special GPS units support. So for GPS-record purposes it is not suited, however, for fun rankings it is way better than e.g. positional data from standard units. The recorded SBP-file can be processed as well as other SBP- or SBN-datafiles from the smartphone or an SD-card-adaptor and posted directly from the smartphone to GPS-SpeedSurfing (GP3S) or processed by GPSResults.

**With speech output of the actual speed and the last run in the selected category (2s, 10s, 250m, 500m, 1NM, Alpha500m), GoogleEarth-overlay, and online tracking of the last run of the selected category for live-rankings etc. and Countdown-timer (5min, 3min, 1min, 30sec).**

**Description:**

## MainView:



The **TracksView** , **Count-Down** , **ZoomedView** , and the **Settings**  can be accessed from the header bar.

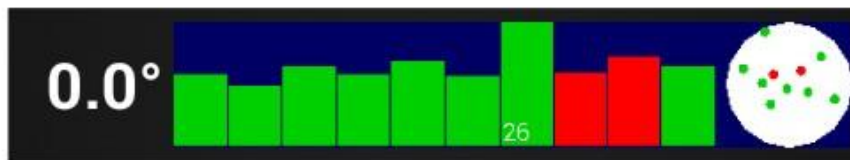
Top to bottom:

**13:31:28**

If there is a valid GPS-fix, the GPS-time is displayed, otherwise 'no GPS fix'.

Latitude: N 53°34'32.4"      Longitude: E 9°57'03.8"  
Altitude[m]: 57.0      Accuracy[m]: 38.0  
Distance[km]: 0.57      Duration: 01:45:22  
Bearing:      Satellites: 9

Actual position, Accuracy (HDOP x 5), number of satellites used for the fix, travelled distance and time.



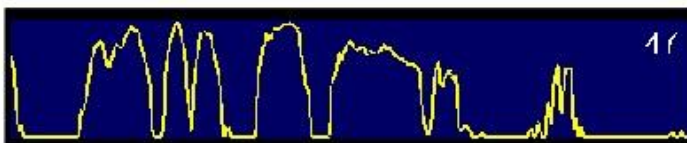
This field shows the bearing and the green and red bars are representing the tracked satellites, where the green bars are the satellites used for the actual fix. The number close to the the tallest bar is the best SNR. The display is updated with every new GPS trackpoint (1 Hz). Satellite-IDs and -SNRs are saved in the SBP-file. Satellite positions are indicated by the small polar-plot on the right.

Speed	2s	10s	250m	500m	Alpha
best	46.24	45.99	45.34	42.60	na
last	27.87	36.80	35.59	34.96	na

Here the best speeds since the last **Reset** or **Start Recording** are displayed for the most important categories together with the last runs that were faster than the **MinSpeed** (can be adjusted in the **Settings**).

**Speed: na**      **5x10s: 44.62**

The actual speed and the average of the five best 10s-runs are shown here.



Speed over time graphics of the last 10 minutes (600 points). The horizontal red line visualizes the MinSpeed, the number is the maximum speed of the display (units apply).



Fileformat (binary SBP-files are always written when recording), the optional GPX-format requires more disk space, but can be processed by most GPS-programs.



**Units** the apply for all displayed speed numbers and for the **MinSpeed** for the **last** runs.

**/storage/emulated/0/GPSLogIt/20150507\_180846 1529**

Filename of the recorded SBP- or GPX-file (date and time). Files will be saved in the internal memory of the smartphone under the folder **GPSLogIt**. The number of saved points is displayed on the right.



Click this button to start the recording, if there is no valid GPS-fix yet, the button will be colored yellow, when the recording is in progress, the button is colored green. If you start recording the best and last speeds will be reset as well as the travelled **Distance** and **Duration** and the **online tracking** (if selected) will be started.



Click this button to reset **best** and **last** speeds as well as the travelled **Distance** and **Duration** at any time.



After you stopped the recording the actually saved file can be analyzed by the **GPSResults**-functionality and the results can be uploaded to **GPS-SpeedSurfing**. Both processes may take some time depending on the processor speed of your smartphone.

### ZoomedView:



The **MainView** , the **TracksView** , and the **Settings**  can be accessed from the header bar.

Top to bottom:



If there is a valid GPS-fix, the GPS-time is displayed, otherwise 'no GPS fix'.



Duration HH:MM:SS, average speed (units apply), and accumulated travelled distance [km]

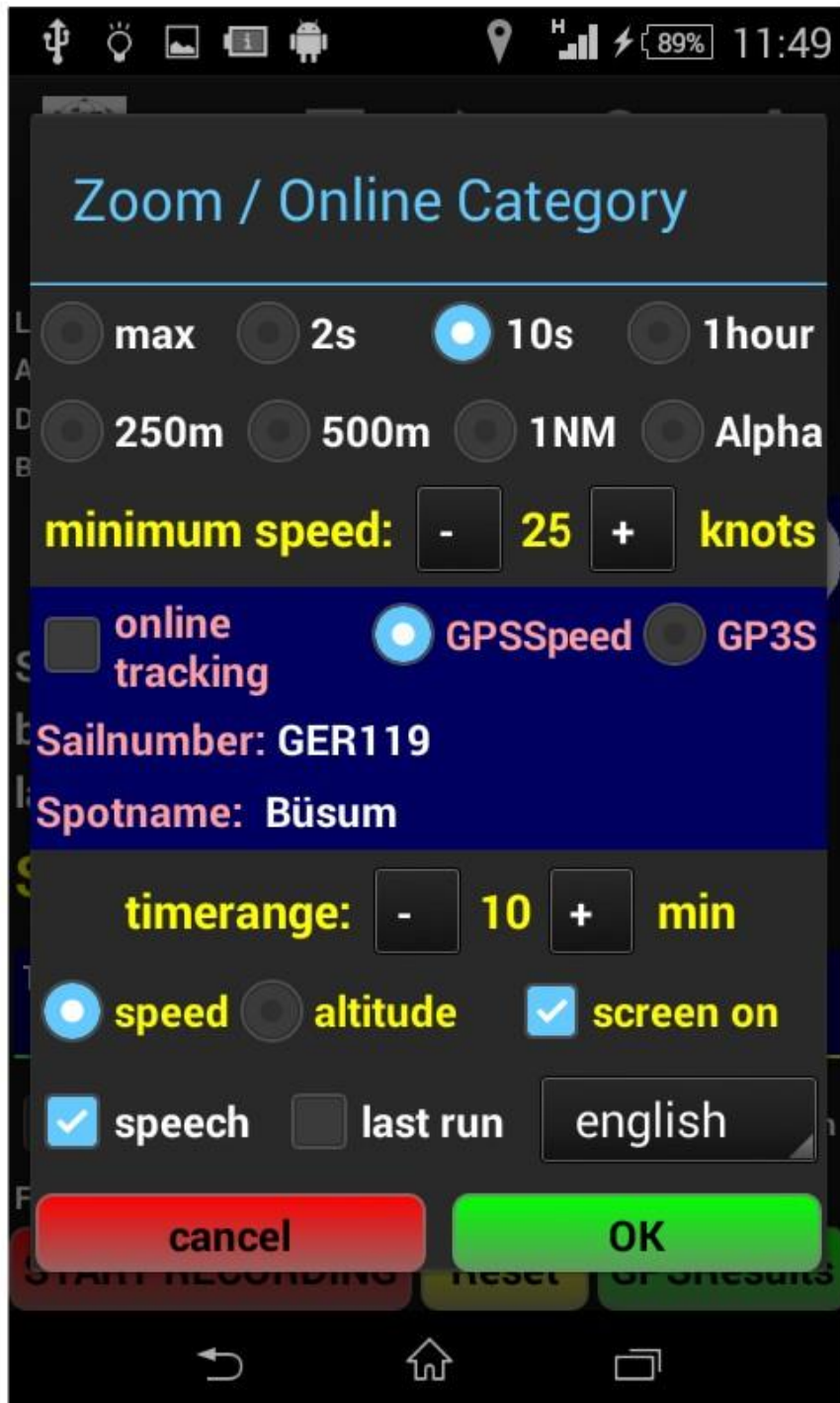


Best (top) and last (bottom) runs in the category shown in the middle (units apply). For the last run all trackpoints have to be above the minimum speed, it is displayed when the speed drops below this speed. MinSpeed and category can be changed in the **Settings**. As long as the actual speed is above the minimum speed it will displayed in the last run field.

Speed: **na**      5x10s: **31.29**

Actual speed and average of the five fastest 10s runs (units apply).

## Settings:

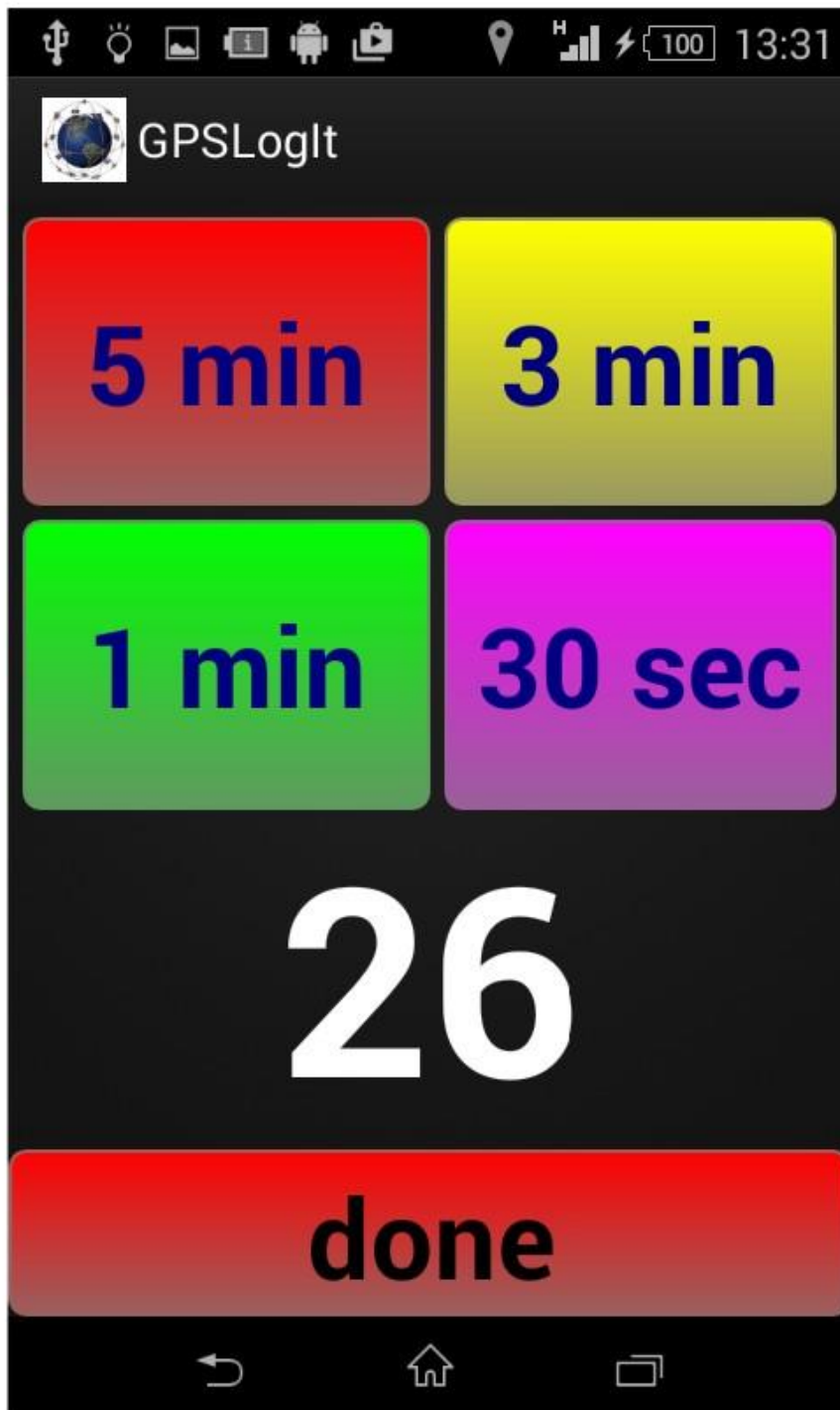


Here the category for the **ZoomedView**, the minimum speed for the last runs (units apply), and options for leaving the screen on and for speech output can be adjusted. If you enable **online tracking**, the last valid run of the selected category is sent to this website (uploaded runs can be seen under [www.gps-speed.com/ranking.php](http://www.gps-speed.com/ranking.php)) or to [www.gps-speedsurfing.com](http://www.gps-speedsurfing.com) (GP3S) together with the best five 10s runs. For online rankings optionally your sailnumber and a spotname can be specified.


The timerange for speed or altitude in the **MainView** can be changed and the screen can be kept on.

Speech output works for speeds above the minimum speed and after the run is finished (speed below MinSpeed) the speed of the selected category is announced. After pressing **OK** the settings will be applied and saved.

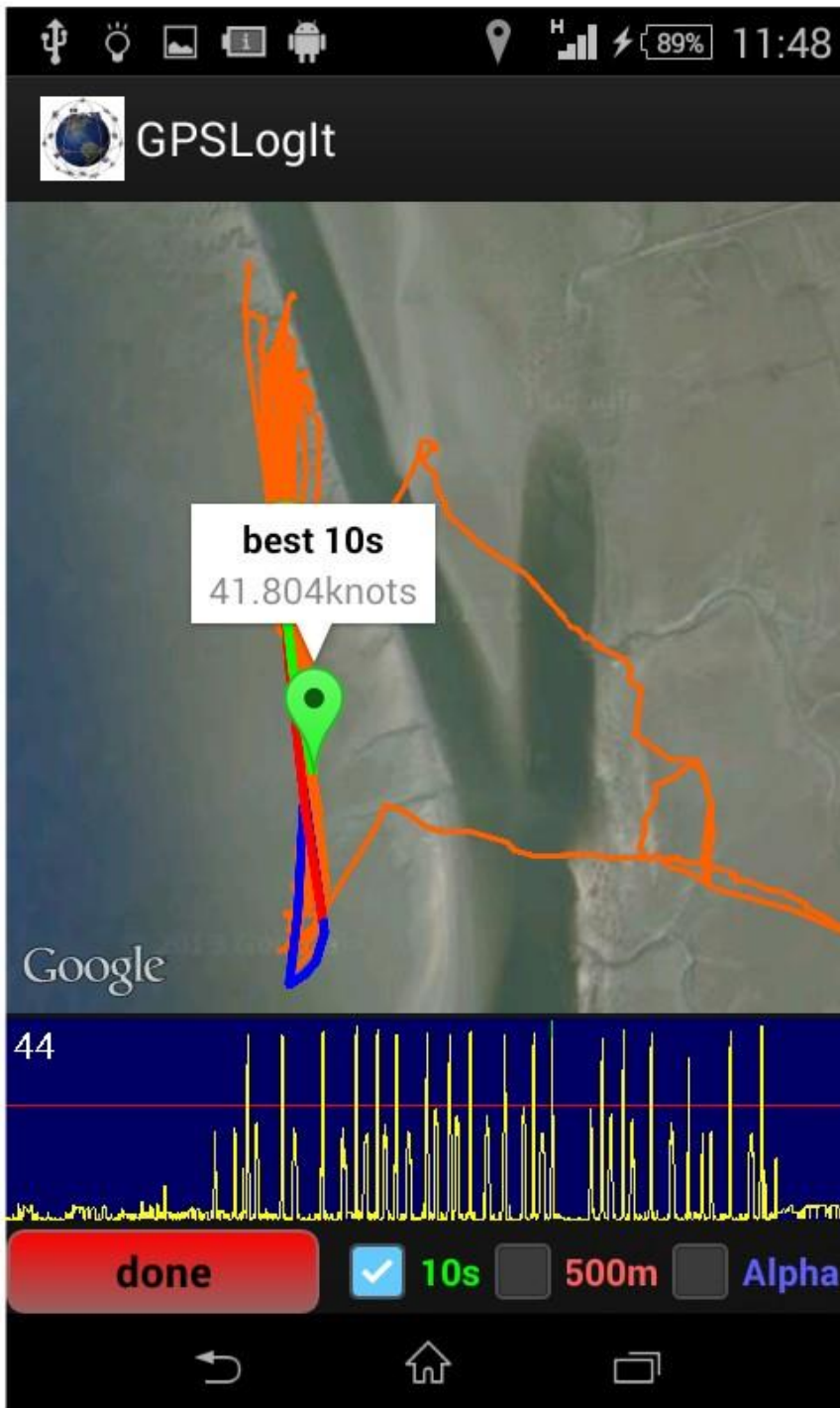
## CountDownView:



For a count-down with speech output there are four options, with **5min**, **3min**, **1min** or **30sec** durations. The count-down starts when you hit the corresponding button, the remaining seconds are displayed and the voice announces

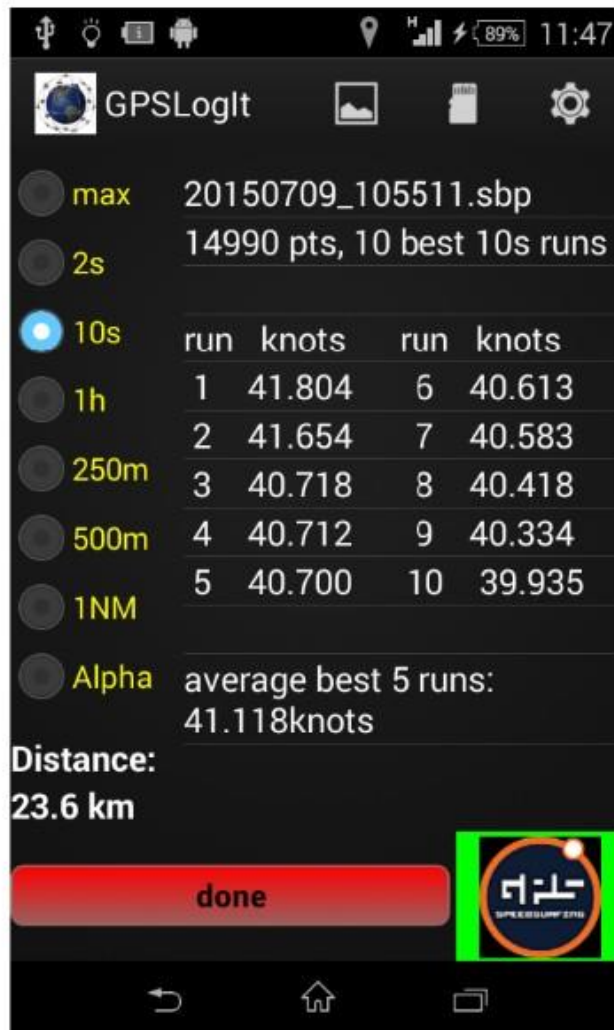
them with decreasing intervals. The count-down can be stopped by pressing  or restarted by pressing the corresponding button. After the count-down is finished, the App returns to the **MainView**.

## TracksView:



The recorded tracks overlaid to GoogleEarth (when connected to the Internet) are shown together with a speed over time plot (bottom with the red line representing the MinSpeed, the number in the left corner is the maximum speed (units apply)). The GE-view can be shifted and zoomed with two fingers. The checkboxes can be used to overlay the fastest 10s (green), 500m (red) and Alpha (blue) sections.

## ResultsView (GPSResults-light):



The **TracksView** , the **FileSelection**  and the **GP3S Username/Password-Settings**  can be accessed from the header bar.

This view uses the same algorithms as **GPSResults** to compute the fastest 10 runs in all categories. On the left the categories can be chosen. The results are displayed on the right together with the filename and the number of trackpoints in that file. The average of the five best runs is also shown.

From the **FileSelection SBP-** or **SBN-**files (GT11 or GT31) that are stored on your smartphone can be selected and analyzed. Depending on the filesize and the processor speed of your phone the computations may take a while, so please be patient.



### GP3S Username/Password

Username:

Password:

cancel
done

Clicking the **GP3S**-button will upload your results to [www.GPS-SpeedSurfing.com](http://www.GPS-SpeedSurfing.com). You have to have an account there and specify your username and password accordingly (see below, no special characters e.g. german Umlaute allowed). Username and password will be saved and automatically applied next time. After successful upload an OK-dialog window will appear.

